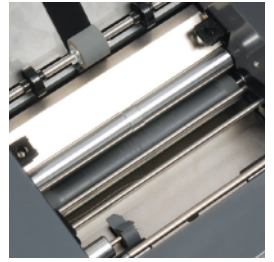


ANGLED SEAL TECHNOLOGY



Exclusive angled seal technology provides exceptional seal quality.

→ ES 2000 DESKTOP PRESSURE SEALER

Quickly and easily folds and seals single-sheet self mailers. Includes a long 240mm fold plate to handle all folds except 14" C fold (a 270mm fold plate to process 14" C fold is available to swap with the 240mm for an additional charge). Provides an environmentally friendly mailing solution by eliminating envelopes. Can be used for a wide variety of applications including paychecks, invoices, tax forms (W2, 1099, etc.), medical reports, and ID cards. Compact, desktop design and quiet operation make it ideal for corporate environments. Easy to set up and maintain. Proprietary angled seal technology provides exceptional fold and seal quality. 4 fold settings (Z, V, EZ, double parallel).

Dimensions (D x W x H): 15 x 13 x 11 inches, Shipping weight: 80 lbs.



→ ES 2000

Speed	2,200 sheets/hr
Paper size	6" x 8" to 9 1/2" x 14"
Paper weight	24 to 28 lbs.
Sheet capacity	150*
Power supply	115 V, 60 Hz

* may vary due to variations in paper

Dealer:



3134 Industry Drive
North Charleston, South Carolina 29418
800-223-2508
www.mbmcorp.com



945B Southgate Drive
Guelph, ON N1L 0B9
800-387-2528