

# TRIUMPH® 0105 U

High quality, manual rotary trimmer with safety cutting head, automatic clamp, and slotted side brackets for cutting oversized formats. Mounted on sturdy metal stand with collection tray.

<b>Cutting width, inches</b>	41 1/4
<b>Cutting height, inches</b>	1/32*
<b>Table size (D x W), inches</b>	11 x 41 1/4
<b>Dimensions (D x W x H), inches</b>	15 x 51 x 38
<b>Shipping weight, pounds</b>	46

\*may vary due to variations in paper



Ergonomic safety cutting head with self-sharpening, hardened steel rotary blade. Stainless steel counter blade. Precision cross bar. Slotted side brackets for cutting oversized formats. Transparent bar clamp with automatic clamping action. Anodized aluminum cutting table. Dual measurement scales on cutting table. Side brackets constructed of sturdy, impact-resistant ABS plastic. Mounted on sturdy metal stand with collection tray and non-slip rubber feet.

[WWW.MBMCORP.COM](http://WWW.MBMCORP.COM)  
TEL: 800-223-2508

[WWW.IDEAL-MBM.COM](http://WWW.IDEAL-MBM.COM)  
TEL: 800-387-2528

**MBM**  
CORPORATION

  
**IDEAL.MBM**  
CORPORATION

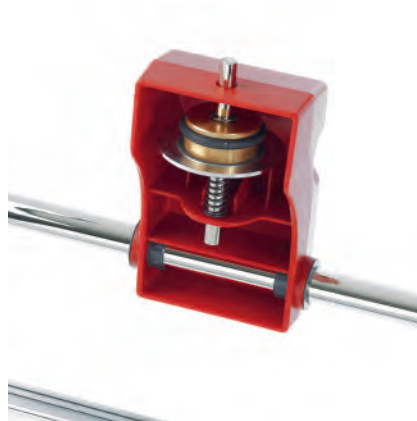
# TRIUMPH® 0105 U

## Features



### SAFETY CUTTING HEAD

The comfortable, ergonomically designed cutting head ensures safe and precise cuts every time.



### HARDENED STEEL BLADE

The self-sharpening rotary blade is made of special hardened steel.



### MEASUREMENT SCALES

Two measurement scales on the cutting table allow perfect alignment of paper.



### COLLECTION TRAY

A collection tray catches waste paper for a neat work area.

