

TRIUMPH® 1158

Manual tabletop trimmer featuring a 22 1/2" cutting length.

sheet
40
capacity
← 22 1/2" →

Resharpenable blade set made of Solingen steel

Manual clamp for variable pressure

Solid all-metal construction

Automatic safety guard

Precision side lay with measuring scale and adjustable backgauge

Format indications printed on the table



Cutting length	22 1/2"
Sheet capacity	40*
Table size (D x W)	23 3/4" x 14"
Dimensions (D x W x H)	31" x 16" x 10"
Shipping weight	42 lbs.

*May vary due to variations in paper.

Resharpenable, high-quality blade set made of Solingen steel. Automatic safety guard made from transparent, unbreakable plastic material (guard rises and falls with the movement of the blade). Solid manual clamp for variable pressure. Precision side lay with measuring scale (inches/mm) and adjustable backgauge. Letter, legal, ledger size, and various angle indications printed on the table. Solid cast aluminum blade mounting bracket with double pivot bearings for blade axle. Solid all-metal construction. Non-skid rubber feet for safe operation. Quality product made in Germany. Safety tested by independent safety labs.

MBM
CORPORATION

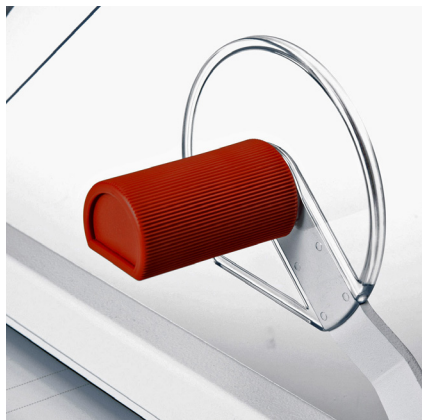

IDEAL.MBM
CORPORATION

WWW.MBMCORP.COM
TEL: 843-552-2700

WWW.IDEAL-MBM.COM
TEL: 800-387-2528

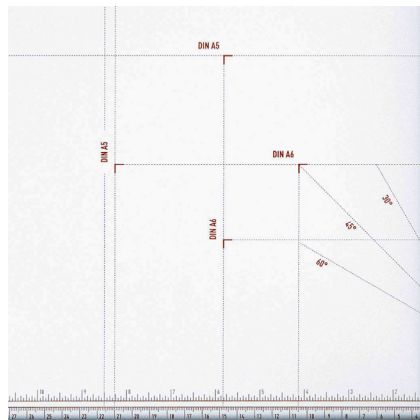
TRIUMPH® 1158

Features



MANUAL CLAMP

With this solid manual clamping device a variable clamp pressure can be applied depending on the material to be cut.



FORMAT INDICATIONS

For efficient and easy cutting; Standard paper sizes and various angle indications printed on the table.



SOLID BLADE MOUNTING BRACKET

Sturdy design; Cast aluminum blade mounting bracket with double pivot bearings for the blade axle guarantees accurate rectangular cuts.



THE ERGONOMIC HANDLE

The ergonomically designed handle has been developed for ease of operation and safe cutting.

