

# **PRESSURE SEALER** ES8500

The ES8500 is a versatile tabletop pressure sealer with a feeder capacity of 700 forms, processing up to 9,000 forms per hour. It features a user-friendly control panel, multi-sensor monitoring, quick fold settings, and optional in-line printer compatibility. Ideal for mid-volume use, it handles up to 130,000 forms monthly with exceptional sealing quality.



**A CONTROL PANEL**  
Includes auto stop and auto re-start function, electronic thickness detection, and batch counter.

**B REVERSE FRICTION ROLLER**  
Automatically detects, singulates, and corrects doubles without operator intervention for increased productivity.

**C OPTIONAL CONVEYOR OR VERTICAL STACKER**  
Optional auto-extending conveyor or vertical stacker can hold up to 650 processed forms.cassette for professional results.

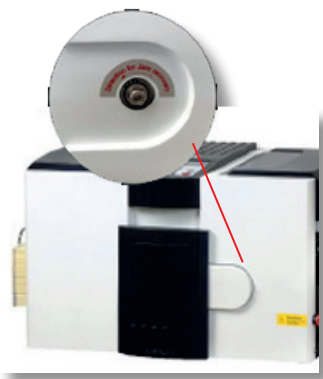
**D BATCH COUNT**  
The Batch Count feature allows you to set a specific number of forms to process in each run. For instance, setting the count to 100 will stop the machine once it completes 100 forms. Press the Start/Stop button to initiate the next batch of 100 forms.

[www.mbmcorp.com](http://www.mbmcorp.com)  
843-552-2700



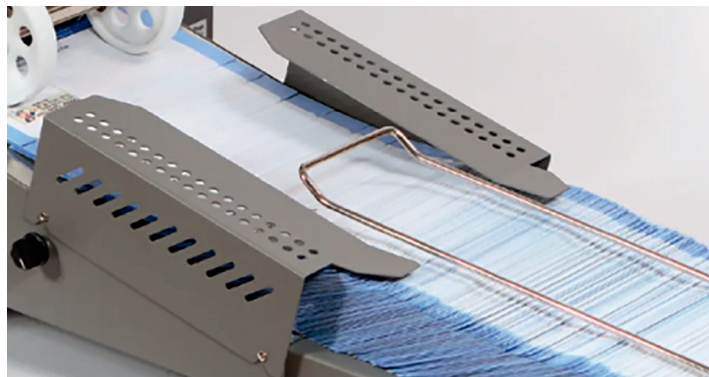
# **PRESSURE SEALER** ES8500

- Minimizes reloading with large 700-form feeder capacity
- Efficiently processes forms at a speed of up to 9,000 per hour
- Equipped with a user-friendly operator panel for easy control
- Multi-sensor monitoring ensures reliable performance and error detection
- Built-in 350-sheet catch tray neatly collects processed forms
- Quick manual fold settings for fast adjustments between jobs
- Optional in-line kit enables seamless printer integration for direct interfacing
- Double feed detection automatically stops operation to prevent misfeeds
- Jam-free button reverses rollers for quick removal of paper jams
- Adjustable batch count allows for controlled job runs and easy re-starts



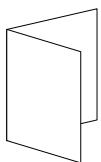
## Jam Free Button

If paper jams at the fold or press rollers, the machine will stop and display an error message. Press the Jam Free button to reverse the rollers, allowing for manual removal of the jam.

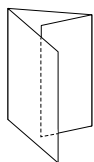


## Conveyor or Vertical Stacker

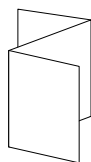
Optional auto-extending conveyor or vertical stacker can hold up to 650 processed forms. Cassette for professional results.



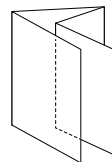
V Fold



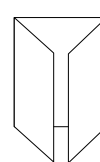
C Fold



Z Fold



Double parallel



Window Fold

## Specifications:

Paper size	A4, Letter, Legal	Form size	Up to 14" depth & 9" width
Speed	9,000 per/hour	Electrical requirements	110 V, 60HZ
Sheet capacity	700 pressure seal forms	Dimensions (D x W x H)	24" x 18" x 16"
Paper weight	20 - 28 lbs	Shipping weight	195 lbs

www.mbmcorp.com  
843-552-2700

